



ABOUT US

ZÖCHLING GROUP OF COMPANIES

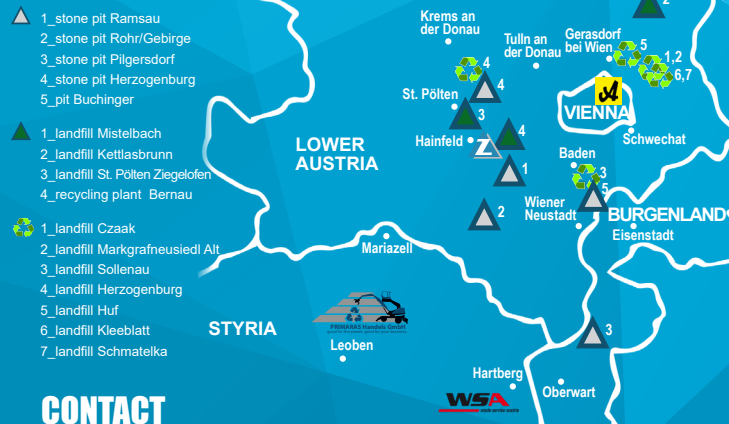
Over 70 years ago, the stone was set in motion. Today over 500 people contribute with their commitment, skills, and performance to make Zöchling what it is. One family that set many things in motion with countless construction machines and vehicles. A family that does not simply deposit its values but let the environment breathe as a pioneer in recycling. Many companies, one tradition, one family.

ONE COMPANIE - MANY OPPORTUNITIES:

Earth Movement | Gravel Extraction | Demolition Work | Civil Engineering | Recycling | Disposal and Landfill

OVERVIEW LOCATIONS

- Headoffice Hainfeld - Zöchling-company group, car dealership Vorreither, organic farming Gut Landsthal
- stone pit / gravel pit
- waste treatment plant & residual material and bulk waste landfill
- landfill BA & BRM
- Albrechtsberger GmbH
- WSA Waste Service GmbH
- Primaras Handels GmbH



CONTACT

Zöchling Abfallverwertung GmbH
 Wiener Straße 61, 3170 Hainfeld
 T: +43 2764 7911-0 F: DW 16
 E: office@zoechling.at
 www.zoechling.at



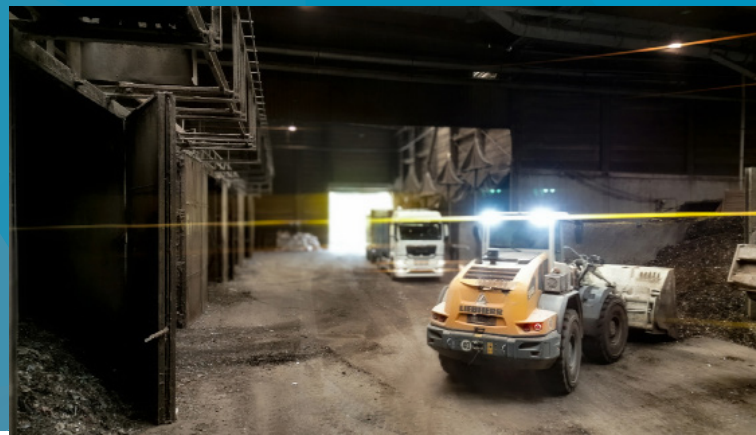
Waste Treatment

The Landfill St. Pölten has been designed for the treatment of organic non-hazardous waste - using the mechanical-biological-treatment (MBT).

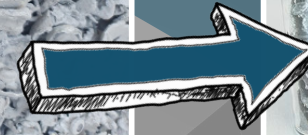
Through the use of the best available technologie in the mechanical and biological treatment, three different material streams are produced:

- Fractions with high calorific values: For material or thermal recycling, various qualitties used by third parties
- Landfill fractions: Low reaction (reduction in gas production), soil-like, dumped at site.
- Secondary raw materials: Ferrous and non-ferrous metals, old wood, used by third parties.

The landfill next to the MBT is approved as landfill for non dangerous waste with biological remains with an approved capacity of 700.000m³.



Waste treatment



Slag processing



Stationary plant

“Zöchling Abfallverwertung GmbH” operates a stationary processing plant at the site in Mistelbach for the treatment of residues from thermal waste treatment/waste incineration. The slag is treated with the best available technology to recover valuable raw materials. These materials are then returned to the production process, thus saving vast amounts of energy as well as CO2.

Mobile slag processing



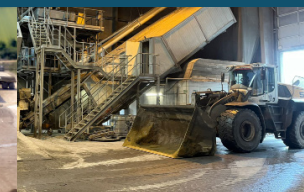
Mobile plant

Zöchling also offers the treatment of waste incineration slag to other landfill operators, incineration plants and disposal companies, directly at their location. In cooperation with leading companies in the field of processing technology, a mobile slag processing plant has been developed with which iron and non-iron metals can be efficiently recovered.

Treatment plants



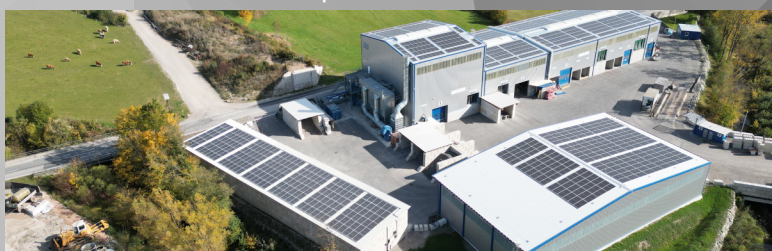
Mistelbach



“Zöchling Abfallverwertung GmbH” operates a plant for the conditioning, stabilization and immobilization of dangerous and non-dangerous wastes at the landfill site in Mistelbach. Dust, ashes and especially sludge are brought into a non-reactive state by binding harmful substances by the treatment in the plant. The so treated waste can be deposited in our own onsite landfill. Mistelbach approved input capacity per year: 90.000 to

The recycling plant Bernau

The “Recyclingcenter Bernau” is used to produce meltable non-ferrous metal fractions from a wide variety of recycling materials. Inhomogeneous input is separated into light and heavy metal fractions through dry processing, which means that water is neither polluted nor consumed. The outfiltered materials can be reused. This means there is less need for using new resources and at the same time the environment is protected.



Did you know?



Our “Zöchling Abfallverwertung GmbH” is an Austrian owner-managed company specialized in construction and operations of landfills and the treatment of hazardous and non-hazardous waste.

At our landfill locations we can, among other things, deposit mineral waste such as insulation material and contaminated soil. There is a usable railway siding near every landfill or treatment plant. This makes rail deliveries possible.



Kettlasbrunn



“Zöchling Abfallverwertung GmbH” operates landfills at three locations in Lower Austria for different types of wastes from excavated materials to residual materials.

- Landfill Mistelbach - residual materials (waste treatment plants)
- Landfill Kettlasbrunn - residual materials
- Landfill Kleeblatt - excavated materials, demolition waste
- Landfill St. Pölten - waste with biological remains